

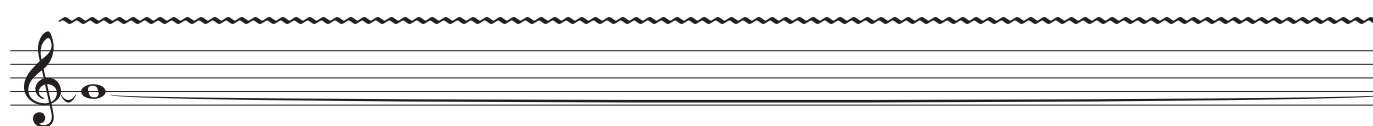


# HORN 1

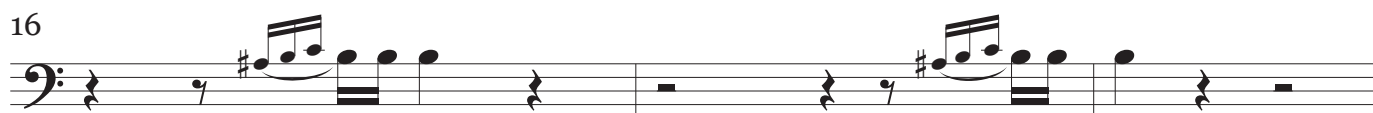
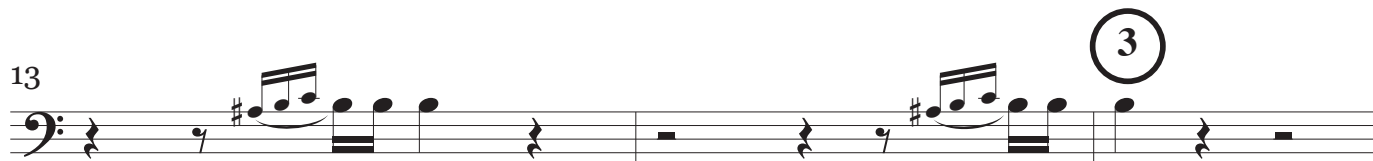
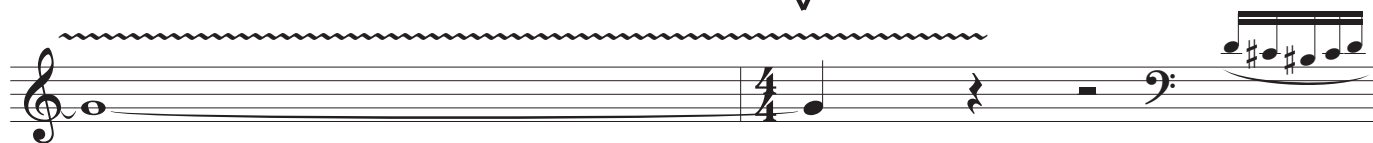
m.4 (conductor's signal to strings)



1 m.5 (conductor's signal to timpani, percussion and synthesizer)



2 ♩ = 104c.  
6  
↓

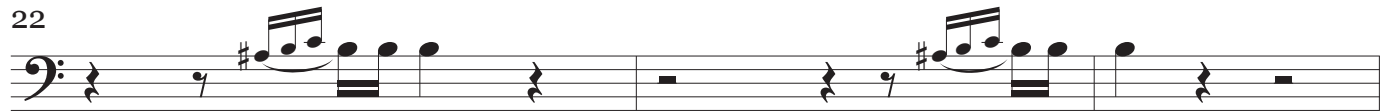


3

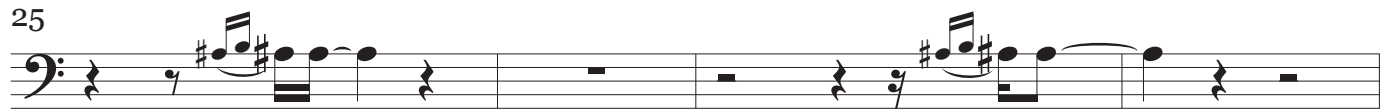
19



22

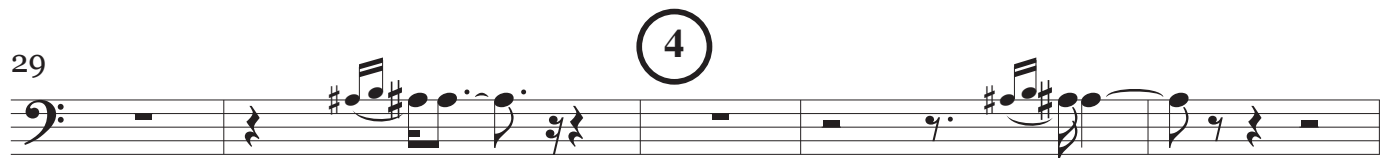


25

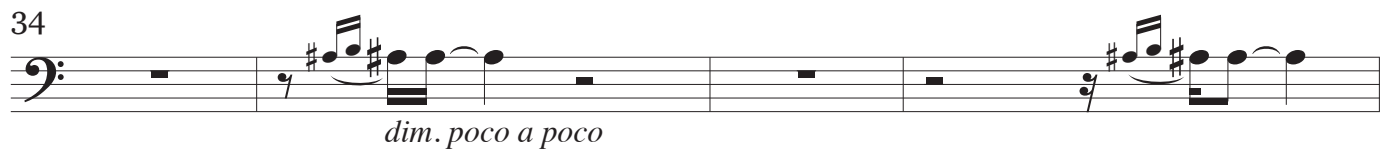


29

4



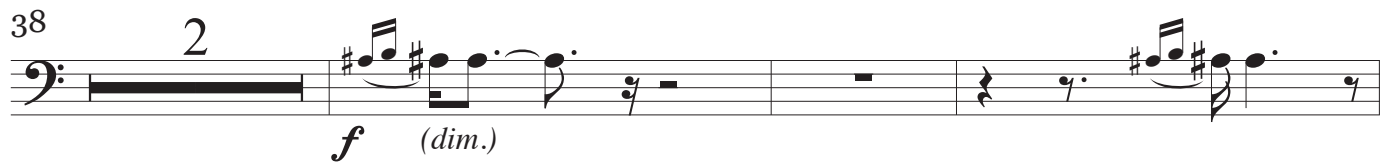
34



*dim. poco a poco*

38

2



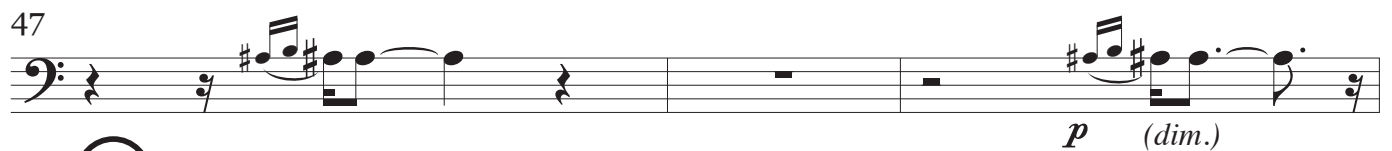
*f (dim.)*

43



*mf (dim.)*

47



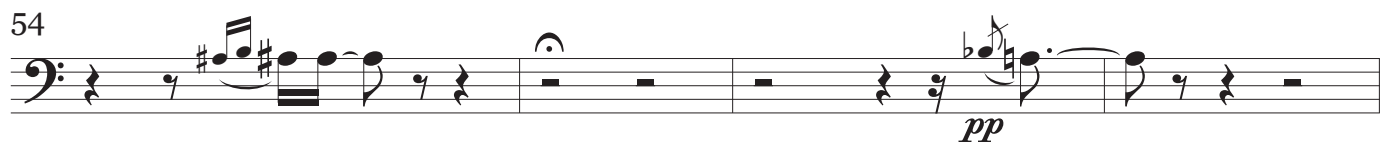
*p (dim.)*

50

5



54



*pp*

58





# 1000 BC—THE CREATED UNIVERSE

## The Odyssey

♩ = 76c. *plaintive, with longing*

Strings

20

♩ = 88c.

♩ = 106c. *brighter*

Oboe

21

*a tempo* ♩ = 88c.

*faster* ♩ = 106c.

22

♩ = 96c.

*faster* ♩ = 106c. *broaden* \_\_\_\_\_

23

*tempo* ♩ = 96c.

*faster* ♩ = 106c.

♩ = 96c.

# HORN 1

43

43

*pp* *mf*

25

♩ = 106c.

51

51

24

10 3

26

♩ = 96c.

68

68

3 4 4

27

82

82

2

Timpani + Basses

89

89

*p*

28

♩ = 106c.

94

94

5

*pp*

104

110

29

116

mp

Detailed description: This staff contains measures 116 through 121. It begins with a treble clef and a 4/4 time signature. The first two measures contain half notes: G4 (natural), A4 (natural), B4 (natural), and C5 (natural). The next two measures are in 2/4 time, containing quarter notes: B4 (natural), A4 (natural), G4 (natural), and F4 (natural). The following two measures are in 3/4 time, containing quarter notes: E4 (natural), D4 (natural), and C4 (natural). The final measure is in 2/4 time, containing quarter notes: B3 (natural), A3 (natural), and G3 (natural). A long slur covers the entire staff, and the dynamic marking 'mp' is at the end.

122

mf

Detailed description: This staff contains measures 122 through 129. Measures 122-125 are whole rests. Measure 126 is in 3/4 time with a quarter note G3 (natural). Measure 127 is in 5/4 time with a quarter note F3 (natural). Measure 128 is in 4/4 time with a quarter note E3 (natural). Measure 129 is in 3/4 time with a quarter note D3 (natural). The staff continues with measures 130-131 in 4/4 time, containing quarter notes C3 (natural), B2 (natural), and A2 (natural). The dynamic marking 'mf' is placed below the first note.

30

130

ppp pp

Detailed description: This staff contains measures 130 through 137. Measures 130-131 are in 4/4 time with quarter notes G3 (natural), F3 (natural), and E3 (natural). Measure 132 is in 4/4 time with a quarter note D3 (natural). Measure 133 is in 4/4 time with a quarter note C3 (natural). Measure 134 is in 4/4 time with a quarter note B2 (natural). Measure 135 is in 4/4 time with a quarter note A2 (natural). Measure 136 is in 4/4 time with a quarter note G2 (natural). Measure 137 is in 4/4 time with a quarter note F2 (natural). The dynamic marking 'ppp' is under the first measure, and 'pp' is under the fifth measure.

138

3 5

attacca

Detailed description: This staff contains measures 138 through 141. Measures 138-139 are in 4/4 time with quarter notes E3 (natural), D3 (natural), and C3 (natural). Measure 140 is in 5/4 time with a whole note G2 (natural). Measure 141 is in 4/4 time with a whole note F2 (natural). Above the 5/4 measure is a '3' and above the 4/4 measure is a '5'. The word 'attacca' is at the end.

# Shvetashvatara Upanishad

♩ = 68c. *rich and colorful*

150

Flutes + Bass Cl. Timpani Trombones

158

172

*molto rall. — tempo*

186

Trumpets

193

*slower*  
con sord.  
*mp* *mp* *sim.*

197

201

*again a little slower*  
*- poco recit.*

*molto rall.*

210

2

Bass Dr. Timpani

37

*tempo 1<sup>o</sup>* (♩ = 68c.)

218

senza sord.

*sfp*  $\leftarrow$  *sfz*

5 3

**attacca**



44

*sf sf sf sf sf sf*

con sord.

55

*p*

60

43

c.5"

(♩ = 132c.)

65

*fff*

senza sord.

44

73

*sf sf sf*

45

80

Trumets

87

*fff*

46

47

96

Tam-tam Bass Cl. + Bass

# HORN 1

106

+ Bassoons + Cellos

*f*

111

(48)

*ff*

117

*sf*

122

(49) 19 (50) 4

*faster* ♩ = 152c.

147

154

(51)

Flutes

159

161

*Sva* -----

163

(*8va*) -----

**attacca**

# Revelation

52

166 ♩ = 126c.

Musical staff for measure 166, bass clef, 4/4 time signature. The staff contains a whole note chord (Bb2, D3, F3) followed by a whole note chord (Bb2, D3, F3, Ab3). The dynamic marking is *fff*.

173

Musical staff for measure 173, bass clef. It features a series of rests with time signature changes: 2/4, 5/8, 2/4, 4/4, 12/8, and 4/4. A circled measure number 53 is above the staff. The dynamic marking is *fff*.

181

Musical staff for measure 181, split between treble and bass clefs. The treble clef part has a series of eighth notes with accents, dynamic *ff*. The bass clef part has a half note chord (Bb2, D3, F3), dynamic *f*, followed by a whole note chord (Bb2, D3, F3), dynamic *fff*.

186

Musical staff for measure 186, bass clef. It features a series of rests with time signature changes: 3/4, 2/4, 3/4, 4/4, 3/4, 2/4, 3/8, 3/4, and 4/4. The dynamic marking is *fff*.

54

Musical staff for measure 197, treble clef. It features a series of eighth notes with accents, dynamic *mp*, followed by a half note chord (Bb2, D3, F3), dynamic *f*. A circled measure number 54 is above the staff. The dynamic marking is *mp*.

Oboes

203

Musical staff for measure 203, treble clef. It features a series of eighth notes with accents, dynamic *mp*, followed by a half note chord (Bb2, D3, F3), dynamic *f*. A circled measure number 55 is above the staff. The dynamic marking is *mp*.

213

Musical staff for measure 213, bass clef. It features a series of rests with time signature changes: 4/4, 14/4, and 4/4. A circled measure number 56 is above the staff. The dynamic marking is *ff*. A circled measure number 57 is above the staff. The dynamic marking is *Tutti*.

# HORN 1

231 *fff*

235 58 10

59 249 *mp* *f* *f*

Trumpets

257 60 *mp* *mf* *f*

263 *mf* *f* *mf* *f* *p*

268 61 10 *mf*

62 283 *mp* *a little slower rit.—*

Winds +  
Strings

290 290 *tempo* 4 63 *mfp* *mf* *p*

298

*f* *p* *fp* *fp* *f* *p*

305 (64)

*ff* *mf* *pp*

# 1000—DISTANT SHORES

## Deor

♩ = 72c. *dark, brooding*

2

12 (65)

(66)

24

Trombones Vibraphone Flute

30

Flugelhorn *pp*

(67)

38

46 (68)

Trombones

69

53

Vibraphone Flute Flugelhorn

59

*pp* 70 5

69

2 71 Trombones Vibraphone

77

Flute Flugelhorn *pp*

83

72 3

90

*p* *f*

94

2 73 2 *pp*

101

6

# The Pillow Book of Sei Shonagon

Tacet

# 2000—FUTURE

## The Oracle

$\text{♩} = 112\text{c.}$  *bright, ringing*

4

*ff*

11

82

6

*mf* *f*

24

83

2 4

*mf* *f*

36

84

3 2

*mf*

47

3

*f* *f* *f* *f* *f*

54

85

6 4

*f*

68

86

3

*f*

78 87

87 88

99 89

Flute *mf*

106 90

# Obit

91 ♩ = 160c.

122 92

134

142 93

154 94

163 **95**

171 **96**

Trumpets

180 **97**

190 **98**

199 **99**

208

Strings Flute Piccolo Winds + Strings

216 **100**

220

227 **101**

234





## Nocturne

♩ = 40c.

330

342

363 (♩ = 40c.)

364

370

384

♩ = 104c. *steady*

Trumpets + Trombones (blowing air through mouthpiece)

con sord.

393

399

